

kuraray

Noritake

A NEW GLOSS OF ITS OWN.

CLEARFIL MAJESTY™ ES Flow

Your universal flowable composite
for durable esthetic restorations.



CREATE NATURAL ENAMEL GLOSS INSTANTLY

A composite breakthrough made possible.

Imagine creating a natural enamel gloss fast and easy. And enjoying the handling along the way. CLEARFIL MAJESTY™ ES Flow lets you do just that with features that are totally new to dentistry. Thanks to Kuraray Noritake Dental's Silane technology*, millions of fillers now fit into the composite enabling beautiful and durable restorations. Create natural enamel gloss instantly and keep it over time, year after year. So from now on, be inspired to work more with this universal flowable composite.

ESTHETIC RESTORATIONS ARE WHERE THIS UNIVERSAL FLOW SHINES

Natural. Easy. Durable.

Want to restore natural Class V restorations more easily? CLEARFIL MAJESTY™ ES Flow helps you do just that. You can now instantly create an enamel gloss and a great color adaptation for your restorations. Polishing near the gingiva or proximal areas is done in seconds. With the new color range XW to KA6 and new dentin colors A2D, A3D, you restore nature's variation easily. You can enjoy the application right away because we optimized the consistency. And with a flexural strength** of more than 150 MPa CLEARFIL MAJESTY™ ES Flow is so strong that you can even create Class I and II restorations.

* Silane technology
Kuraray Noritake Dental's Silane technology has been engineered to push dental composites to their maximum performance. This high-end Silane technology is the major story behind the world's highest filled direct and indirect dental composites by Silane volume, CLEARFIL MAJESTY™ Posterior and ESTENIA™ C&B. What is Silane? It is the connector between the filler particles and the resin matrix of a composite. Only the best Silane technology will give you durable color stable composites. Now this leading Silane technology is also the story behind CLEARFIL MAJESTY™ ES Flow. Giving you a universal flowable composite with durable esthetics.

** According to ISO 4049: 2009

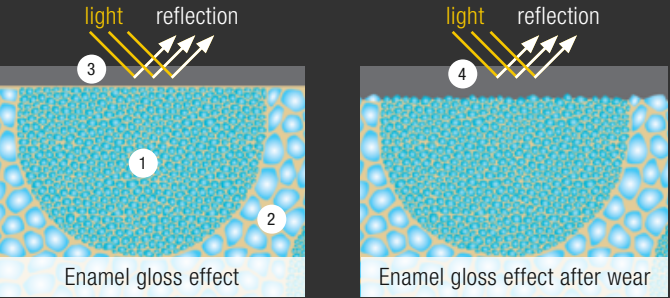


MILLIONS OF FILLERS DO THE JOB FOR YOU

Kuraray Noritake Dental's Silane technology at work.

CLEARFIL MAJESTY™ ES Flow is our highest filled flowable composite in terms of the submicron filler amount. Millions of submicron fillers join together and stay together over time, thanks to our exceptional Silane, creating outstanding gloss on the restoration surface.

The fillers are so small that light reflections show a natural effect even after wear. The light effect of the light diffusion cluster gives you a great color adaptation. It's all about the perfect balance between glossy submicron fillers, light diffusion clusters, resin matrix and Kuraray Noritake Dental's Silane technology.



- ① Light diffusion clusters
- ② Glossy submicron filler with Kuraray Noritake Dental's Silane technology
- ③ Reflecting light
- ④ Reflecting light after wear, no difference to be seen



ENJOY WORKING WITH A FLOWABLE COMPOSITE

Easy application. Great modeling. Fast finishing.

Dr. Nicola Scotti from the Turin University (Italy) shows us how to make a Class V restoration fast and easy by replacing dentin and enamel.

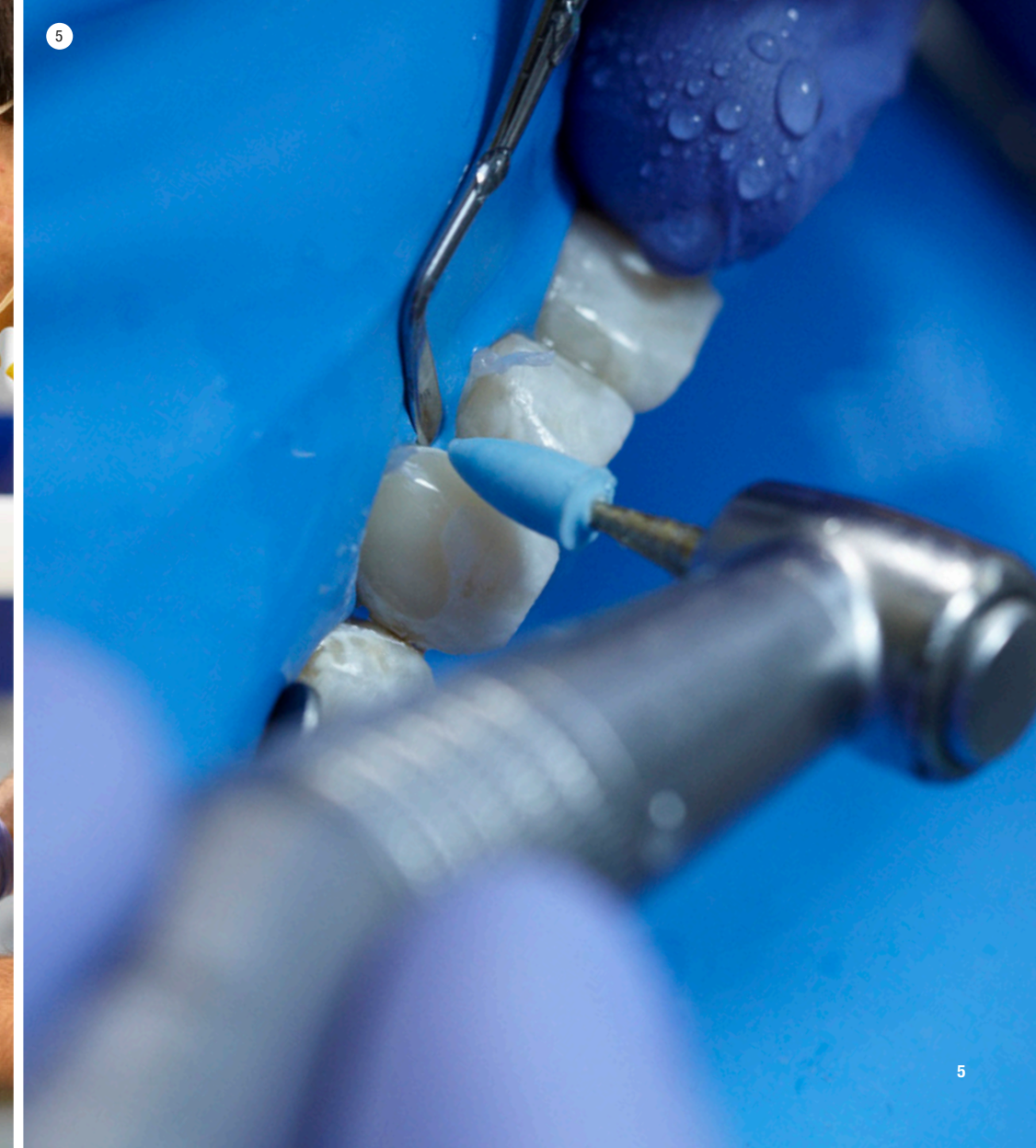
The special syringe makes his flow application easy. Especially when he pulls away the syringe, the composite stays in place. Thanks to the improved consistency he is always in control of the uncured composite.

During modeling, he already gets a feel for his color selection. The color of the flowable composite before and after stay virtually the same. He nicely models the composite into shape to minimize the adjustments after final curing.

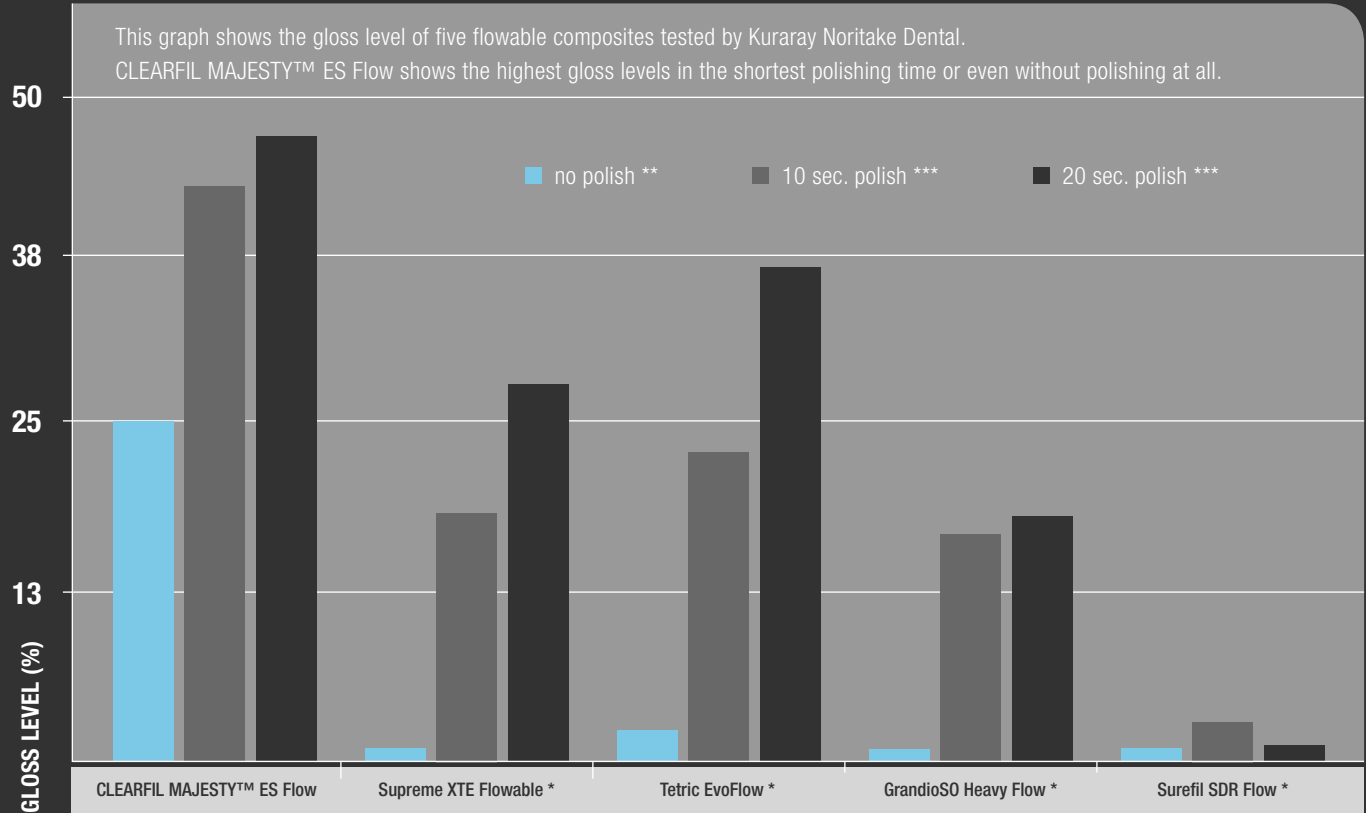
He decides not to adjust the restoration anymore. With his one-step polisher, he simply finishes his restoration in seconds.

"It shows beautiful results with a simple and short procedure. It easily convinced me."

> Dr. Nicola Scotti on CLEARFIL MAJESTY™ ES Flow



GLOSS EVALUATION



* Not trademark of Kuraray Co., Ltd. ** Gloss level without polishing after ethanol wiping. *** Gloss level with polishing by OptiStep Polisher (Kerr Corporation). Source: Kuraray Noritake Dental Inc.

SCIENCE

“The flexural strength of CLEARFIL MAJESTY™ ES Flow showed a value of 152.1 MPa.”

> **Prof. Miyazaki**, Nihon University School of Dentistry, studied the mechanical properties of CLEARFIL MAJESTY™ ES Flow.

“The results of the ΔE are the following for the flowable composites

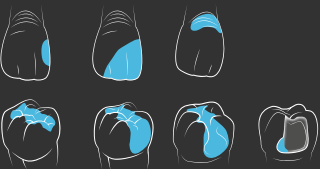
CLEARFIL MAJESTY™ ES Flow:	4.0 ± 0.2,
Filtek Supreme Ultra Flowable*:	4.8 ± 0.2,
Beautiful Flow Plus*:	6.0 ± 0.4,
Estelite Flow Quick*:	6.8 ± 0.2”

> **Dr. Usui, Dr. Hayashi, Dr. Sato and Prof. Momoi**, Dept. of Operative Dentistry, Tsurumi University School of Dental Medicine, showed color changes of composites before and after light curing.
A low ΔE value means a low change in color before and after curing the composite.

TECH SPECS

WIDE INDICATION RANGE:

- Direct restorations for all cavity classes (e.g. root surface caries, v-shape defects), cervical lesions, tooth wear, and tooth erosion
- Cavity base / liner
- Correction of tooth position and tooth shape (e.g. diastema closure, tooth malformation)
- Intraoral repairs of fractured restorations



FILLER LOADING *:	75 wt % (59 vol %)
FLEXURAL STRENGTH *:	151 MPa
COMPRESSIVE STRENGTH *:	373 MPa
RADIOPACITY *:	140 % Al
WORKING TIME *:	approx. 100 seconds

* According to ISO 4049: 2009
Source: Kuraray Noritake Dental Inc.
The final result may be influenced by minor evaluation conditions stipulated by ISO regulations.

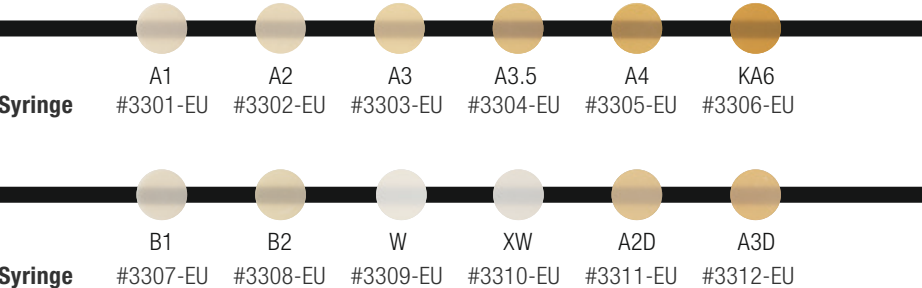
ORDER INFORMATION
CLEARFIL MAJESTY™ ES Flow



1 SYRINGE PER SHADE (1.5ML/2.7G); 15 NEEDLE TIPS PER SYRINGE PACK

Available colors: A1, A2, A3, A3.5, A4, KA6, B1, B2, W, XW, A2D, A3D

#3301-EU up to #3312-EU (For individual order numbers please see the shade overview)



The colors of the actual shade guide may deviate from the printed colors.



NEEDLE TIP
20 tips
#3331-EU



SHADE GUIDE **
All shades
#3000-EU



SHADE GUIDE COMPACT **
A1, A2, A3, A3.5, A4, B1, B2, B3, B4, C1, C2, C3, C4, D2, D3, XW, W
#3001-EU

** Compatible to CLEARFIL MAJESTY™ ES Flow and CLEARFIL MAJESTY™ ES-2.

YOUR CONTACT

Kuraray Europe GmbH
BU Medical Products
Philipp-Reis-Strasse 4
65795 Hattersheim am Main

Phone	+49 (0) 69-305 35 833
Fax	+49 (0) 69-305 98 35 833
E-Mail	dental@kuraray.eu
Website	www.kuraray-dental.eu



Kuraray Noritake Dental Inc.

1621 Sakazu, Kurashiki, Okayama 710-0801, Japan